

Heritage Hunters



These display panels were researched and compiled by pupils from Green Park School, Newport Pagnell

Odell's

Newport Pagnell



Drawing by Ruby, aged 9

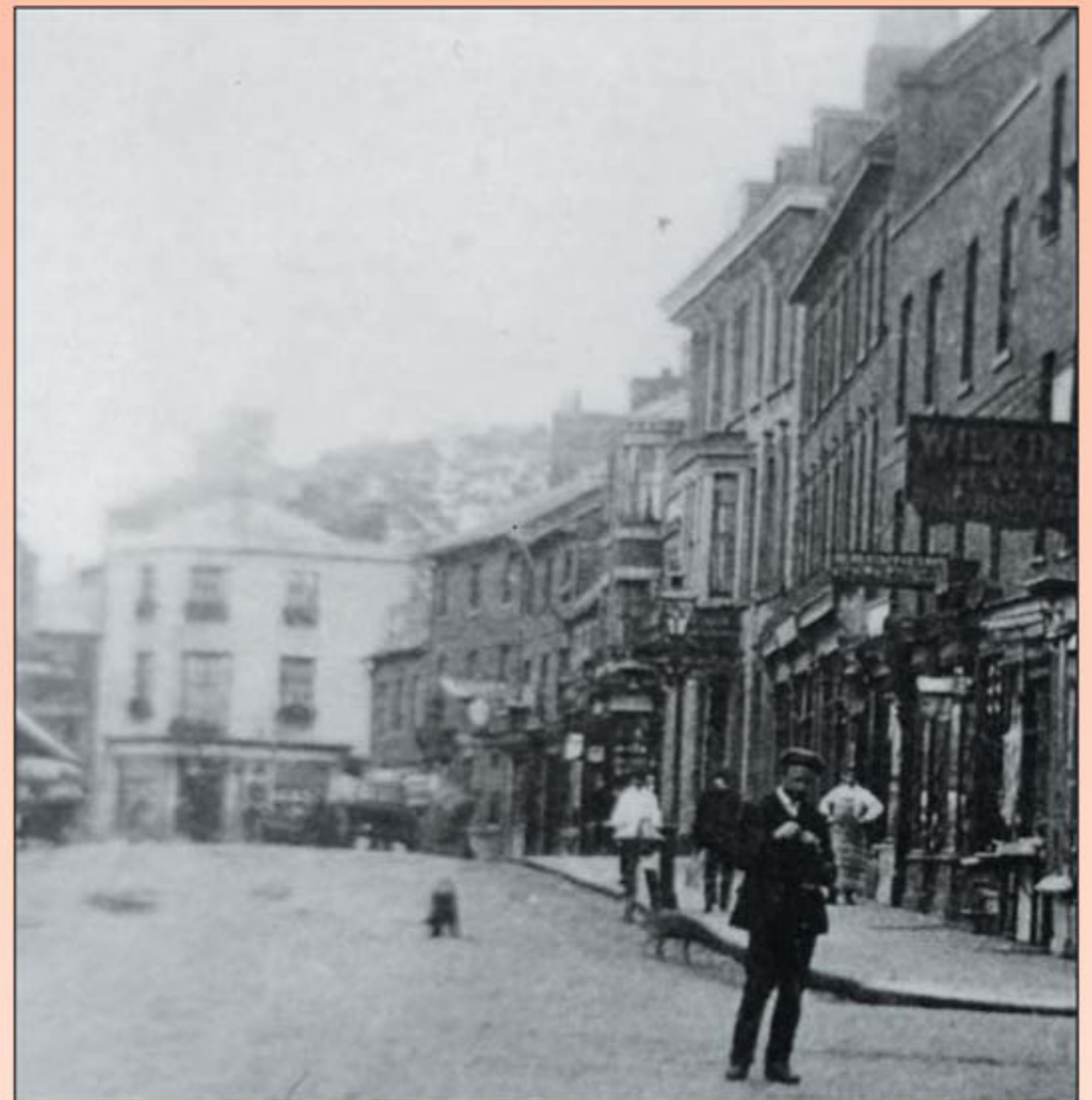
James Odell started his ironmongery business in 1840. The business ran for over 150 years. James Odell covered the doors with wooden mourning doors when there was a funeral because he was very religious. He even did it if he didn't know the person who was being buried.

His son was called John Odell. By 1859 John had warehouses in Newport Pagnell and he opened another shop in Stony Stratford which is still standing

The stone step at the entrance has a dip in it where people have been stepping on it. The main door and the windows above it are curved.

It is said that the top floor is haunted by Emily who died in a fire at Odells.

It is now a Thai restaurant.



The High Street c1910. Odells can be seen on the left



The curved doors, June 2010